



**PROVIDING YOU THE
NECESSARY SKILLS &
KNOWLEDGE, TO GET
THE JOB DONE RIGHT
THE FIRST TIME.**

GENERAL FABRICATION & CNC DIVISION



Luss Engineering is proud of its reputation for providing its clients with high quality workmanship, responsiveness and understanding client versatility.

Many companies have had the privilege of professionally working with Luss in some way or another.

The key to Luss's success is the quick turnaround time and cost effectiveness that is provided to every client, irrespective of job size.

Luss Engineering is confident in tackling every aspect of your project, along with no hidden costs. Contact our team today and get a free obligation quote from our experienced staff.

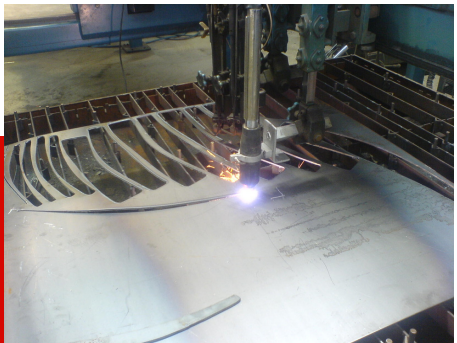
OUR SERVICES

Luss has a diverse range of equipment allowing us to manufacture and repair products from all industries. We are able to produce prototypes, as well as large high volumes due to our CNC machining capabilities.

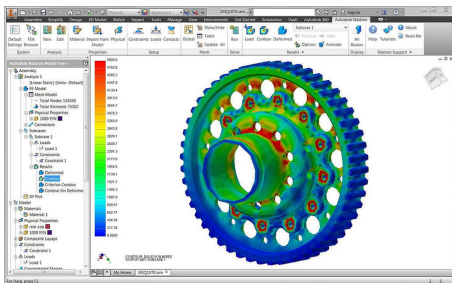
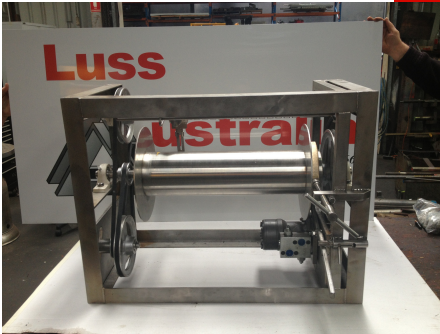
- Larger turning & milling
- Milling horizontal & vertical
- General machining
- Automated cutting saws
- Surface grinding
- Keyway cutting internal or external
- Spline & gear cutting
- Hydraulics & fitting
- Contract labour hire on specialised projects
- Servicing/Maintenance & Repair
- Manufacturing & Fabrication
- Modification & Custom Work
- Design & Modelling

All our work is done in-house in our fully equipped welding/fabrication shop. No task is too difficult.

Contact our Team for a free obligation quote and get the advice and support you need to complete your project.



OUR CAPABILITIES



- *CNC Machining: 4-axis horizontal/vertical and bar feeding production.*
- *Welding: MIG, Flux-core, TIG, ARC & High frequency*
- *Fabrication of structures or equipment, stainless steel, and Aluminium.*
- *Folding, pressing, & manufacturing of sheet metal products.*
- *General Machining: Horizontal/Vertical to over 3m.*
- *Hydraulic Cylinders or shelf products. Install, repair and manufacture.*
- *Deep hole gun drilling.*
- *Keyways, slotting, gear manufacturing (internal/external)*
- *Solidworks User: (2D/3D Modelling, working drawings, reverse engineering, technical drawings/drafting and more.*

HYDRAULICS

All our work is done in-house in our fully equipped welding/fabrication shop. No task is too difficult.

We manufacture high quality cylinders with the exception of manufacture agricultural cylinders and lower grade poorer manufactured cylinders. We control quality and design all custom components that are manufactured in house. All necessary standards and types of cylinders are catered for. We provide a breakdown service for all our customers and other hydraulic services.

- Servicing/Maintenance & Repair.
- Manufacturing & Fabrication.
- Modification & Custom Work.
- Design & Modelling.

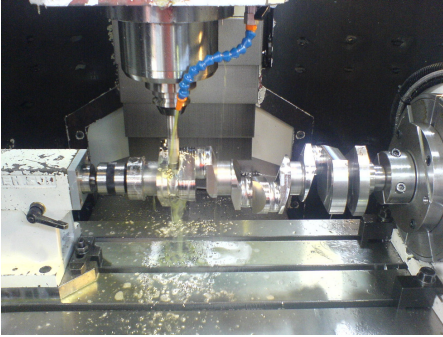


**LUSS PRECISION & GENERAL
ENGINEERING PTY LTD**

**7 Ganton Court
Williamstown 3016 VIC, AU
PH: (03) 9391 4111**

E: sales@lussengineering.com.au

CNC MACHINING



Luss boasts numerous CNC machines (both turning and milling) to help you achieve speed, accuracy and competitive prices based off your criterion.

By keeping up with the latest software and tooling, Luss is able to stay ahead of its competitors and offer you a no fuss service with flexible lead time.

Luss specialises in high volume components as well as specialised or prototype parts.



Including, but not limited to:

- 4-axis milling and turning.
- Horizontal 1500mm+ in CNC
- Turning over 550mm in dia.
- CNC rotary table, thread milling, through spindle coolant.
- 2D & 3D machining/high speed data.
- Bar feeding manufacturing up to 65mm dia.



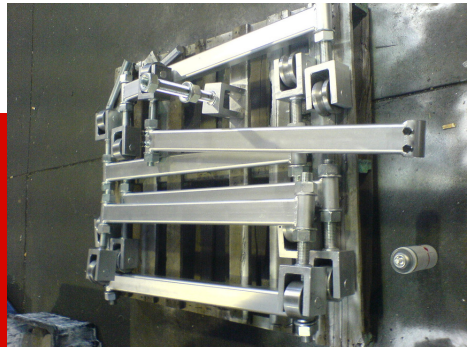
Contact our CNC team today for a no fuss consultation about your next project.

WELDING, FAB. & SHEETMETAL

Our welding department is up to date with all welding techniques and procedures. Luss is constantly improving and is fitted out with the latest in welding equipment to meet and exceed industry standards.

Over recent years there have been many improvements in welding technology, as well as changes in materials in which we use to design and make superior to our competitors.

With these changing facets of welding, weld tests too play an important roll and so we provide independent testing wherever required.



**LUSS PRECISION & GENERAL
ENGINEERING PTY LTD**

**7 Ganton Court
Williamstown 3016 VIC, AU
PH: (03) 9391 4111**

E: sales@lussengineering.com.au

PRODUCTS TO NOTE



- Mig, Tig, Arc, Flux-Core, High Frequency.
- Folding, Press & Guillotine.
- Environmental remediation systems.
- Sound reducing systems & Acoustics.
- Hydraulics & Pressure systems.
- Automation of equipment.
- Pipeline works & Stainless Steel products.





INSTRUMENTATION

Luss Engineering has a long history in instrumentation products, manufacturing products for many instrumentation companies.

We have developed our own gun drill machine for such applications and also do outside drilling for other companies.



Including, but not limited to are the following products: Thermowells, S/S fittings, Seal Housing, and Pipe work. We work with materials such as Hastelloy, Inconel, Monel, Stainless Steel, Titanium, and Teflon.

We provide the following:

- System automation. control solutions for a variety of applications.
- Field instrument device selection and specification.
- Safety relief valve selection and specification.
- Preparation of instrument loop diagrams and installation.



PRODUCTS TO NOTE

Flanged & threaded Thermowells:

- *Fabricated or solid.*
- *Stainless steel fittings of all types.*
- *Manufacturing of machines & equipment for manufacturing instrumentation.*
- *Deep hole/Gun drilling.*
- *Pressure testing.*
- *All welding techniques & weld test.*



LUSS PRECISION & GENERAL
ENGINEERING PTY LTD

7 Ganton Court
Williamstown 3016 VIC, AU
PH: (03) 9391 4111
E: sales@lussengineering.com.au

CONTACT US

LUSS PRECISION & GENERAL
ENGINEERING PTY LTD

7 Ganton Court
Williamstown 3016 VIC, AU
PH: (03) 9391 4111
E: sales@lussengineering.com.au

OPERATING HOURS

Monday 7:30am–5pm
Tuesday 7:30am–5pm
Wednesday 7:30am–5pm
Thursday 7:30am–5pm
Friday 7:30am–5pm
Saturday Closed
Sunday Closed